

MONUMENT TO FUTURE

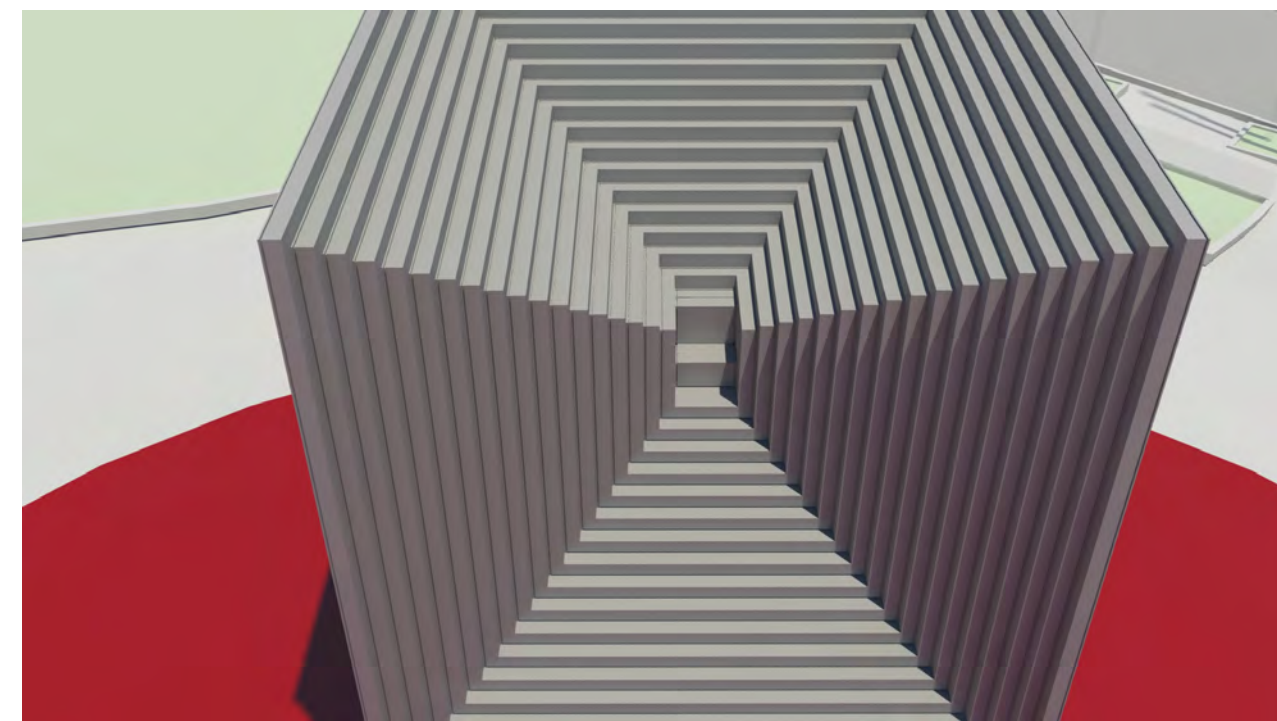


fig. 1 - perspective view

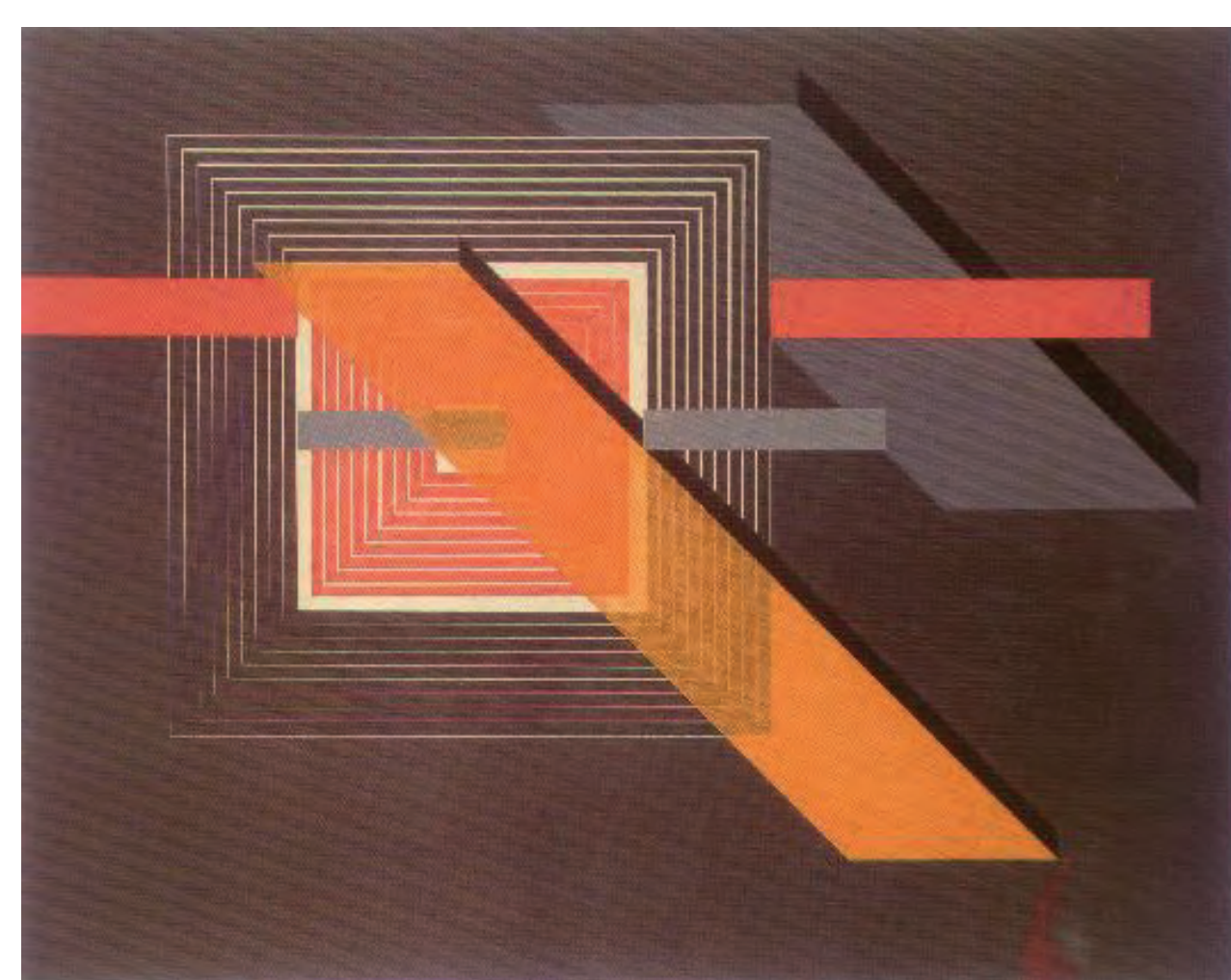


fig. 2 - Proun 1924-1925

The basis of the proposal is a synthesis of two works of Lissitzky.

The first work (fig. 4) is the "Monument to Rosa Luxemburg (1919-21)", where El Lissitzky used a typical form of his oeuvre –the rectangle in a circle, tilted from the center - converting it in that way to a symbol.

The second one is a work from the late PROUN series (1924-25), in which the rectangular grid creates a vertigo to the very center of it, as well as the illusion of volume and space.

These two seem to fit perfectly one over the other, as if the whole thing was envisioned by Lissitzky himself, creating a unified merge.

This action of blending creates as a transcription to the architectural universe, a solid state box of coherence, which seems to be the main element of the essay.

Therefore the top view (fig. 0) is inspired by the relation between the UNOVIS logo (fig. 6) and the R. Luxemburg's monumentary painting.

The construction may seem monolithic and firm at first sight but it has a fineness on its scaled elements. This is visible to the main feature of this concrete box, a human-sized seat in the center pivot of the cube, a position for the artist - designer of the future to observe and figure the horizon of creativity. Positioned there they could experience the deep feeling of grief and sadness, created to everyone isolated. Human is who overcomes the limits - the margins and the bourns - not Ideas, because those are a human artifact rather than a metaphysical intervention.

The whole construction focuses to the experiential and the body. The vision is to define the position, where the designer of the future will organize the cosmos of images.

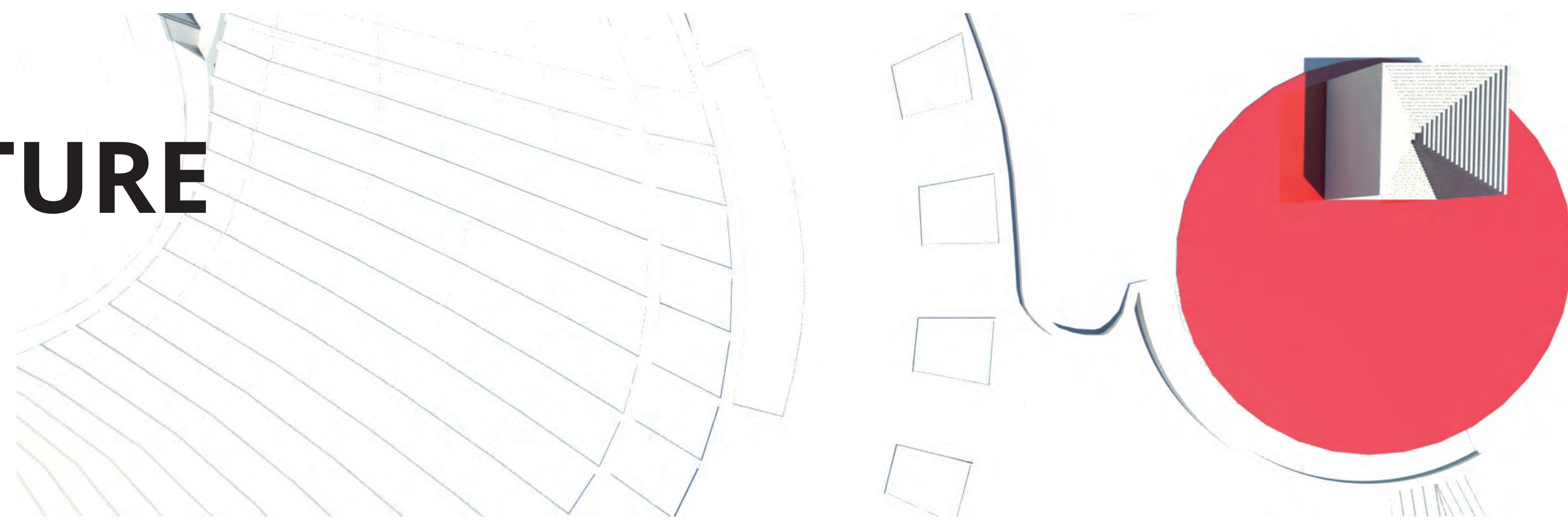


fig. 0 - top (perspective view)

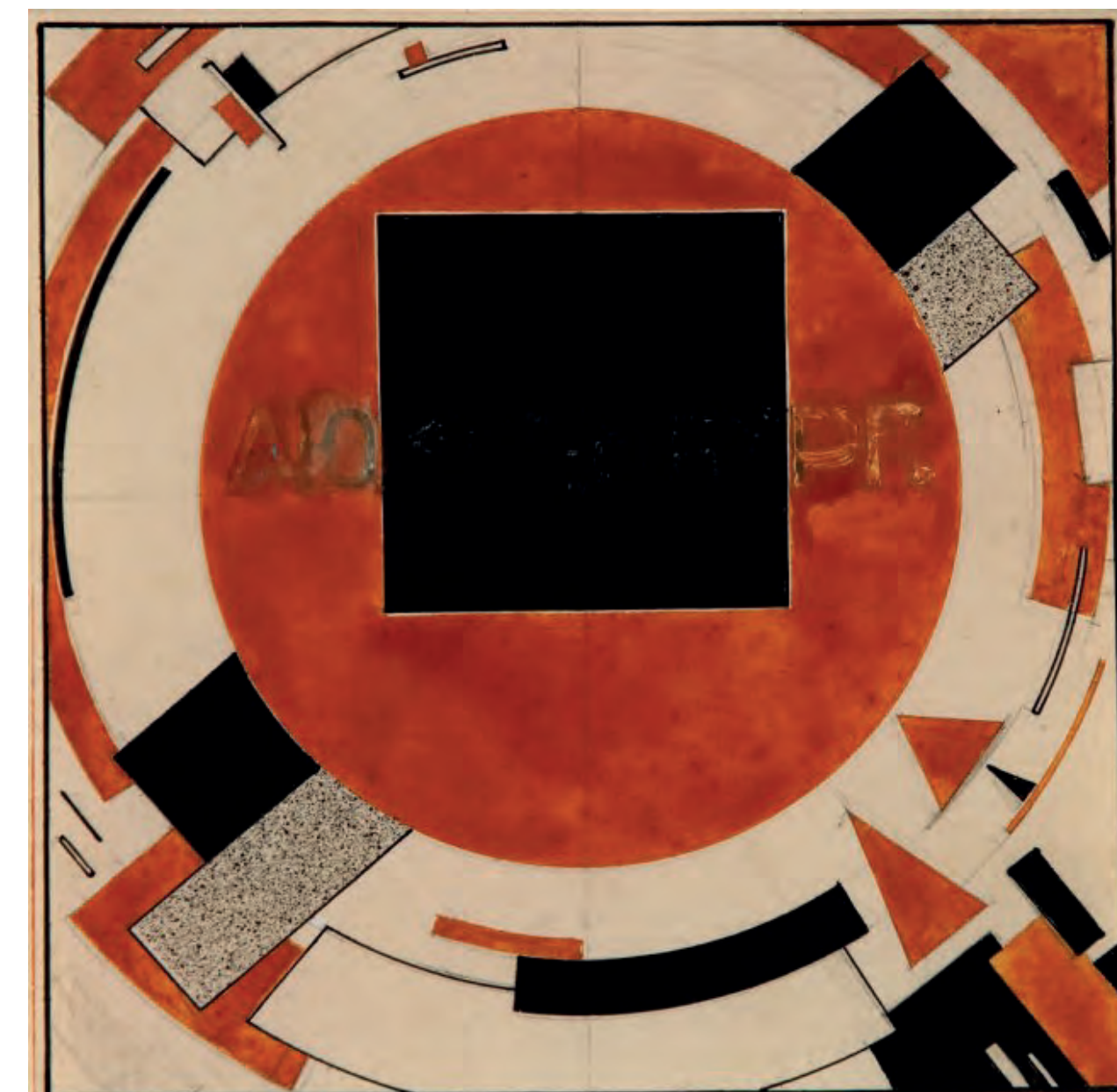


fig. 4 - "Monument to Rosa Luxemburg", 1919 - 1921

Technical specifications:

The whole construction is based on 6 modules (fig. 7). Each module is 22cm by 22cm by 22cm. This results to the 8.8m each side for the total dimensions of the box, on a rounded basis (over the fountain) approximately 22m diameter. In between each wall there are lights, which is why the construction is not a one-piece block.

The modules are made from steel and the exterior ones are painted with deep-grey cement-paint.

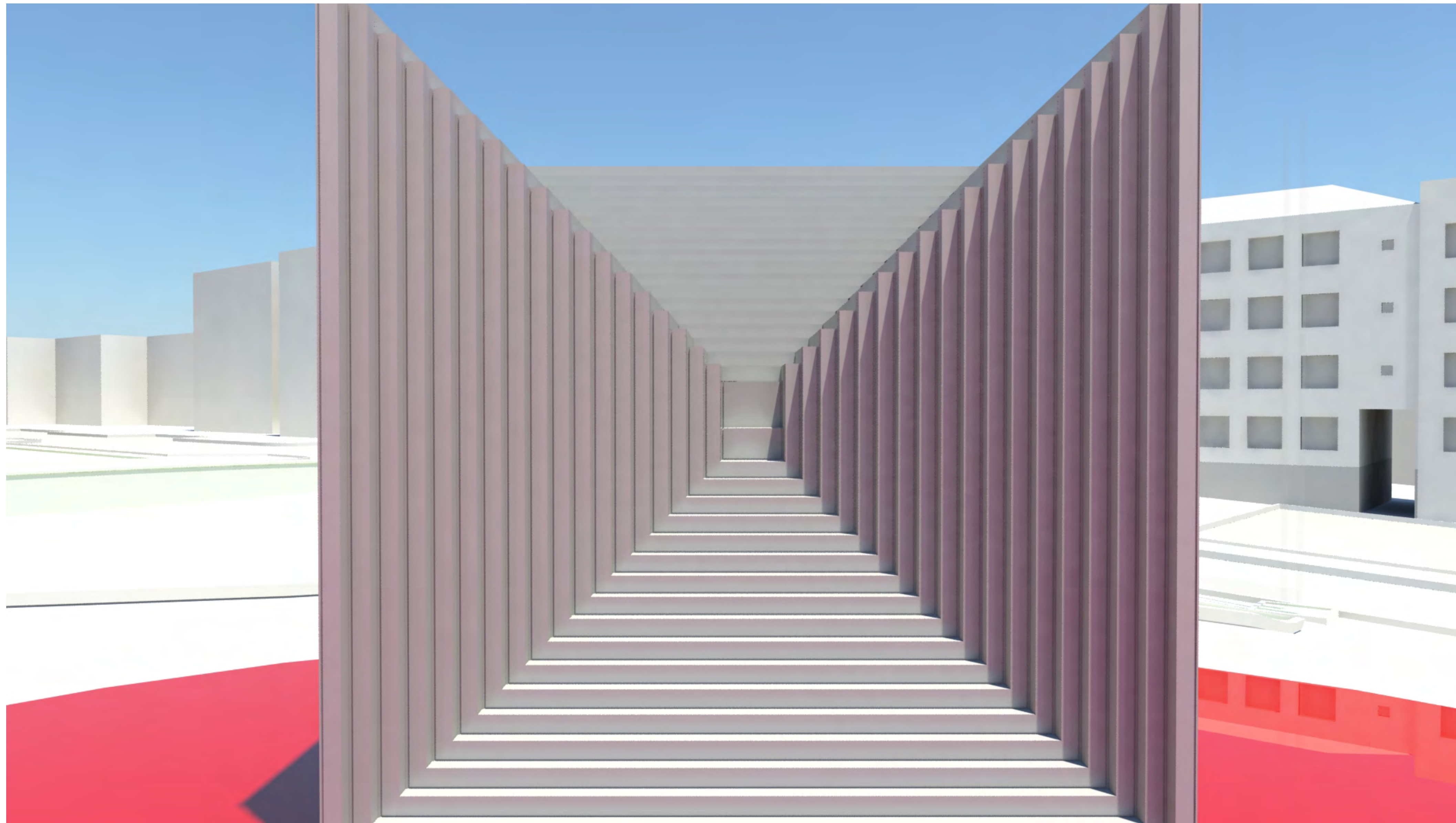


fig. 3 - front view

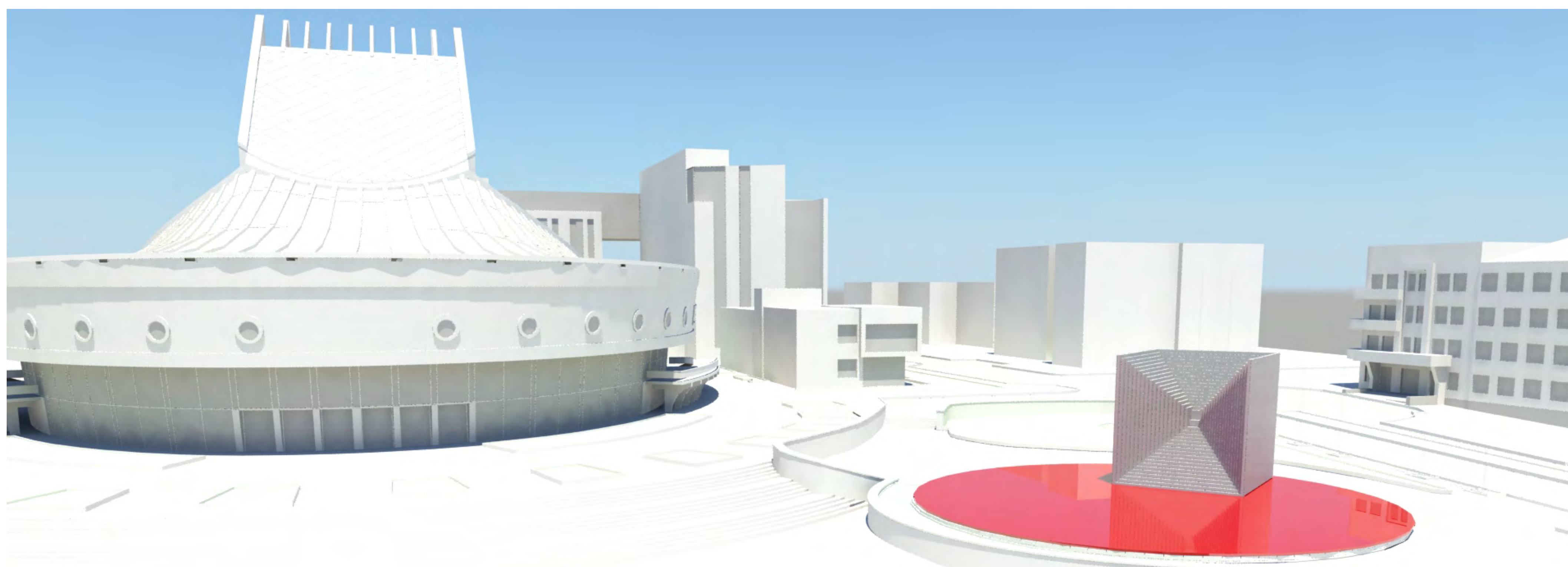


fig. 5 - general view

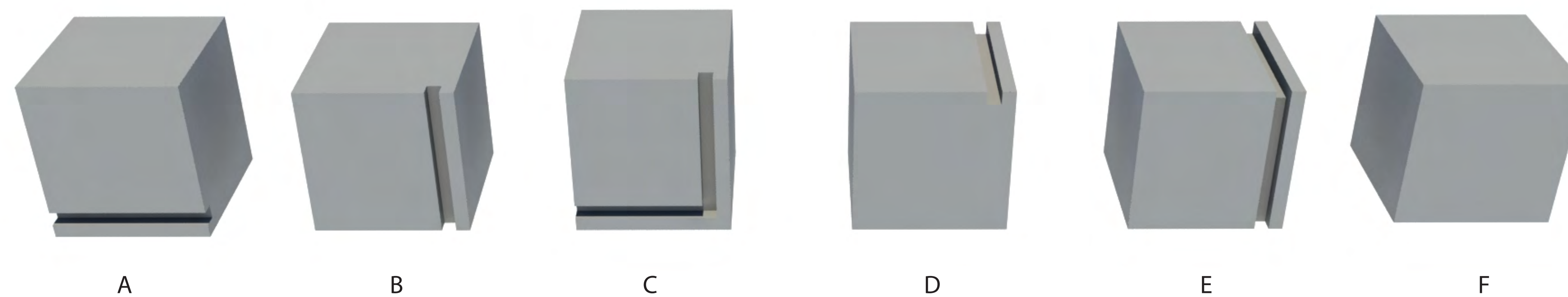


fig. 7 - modules

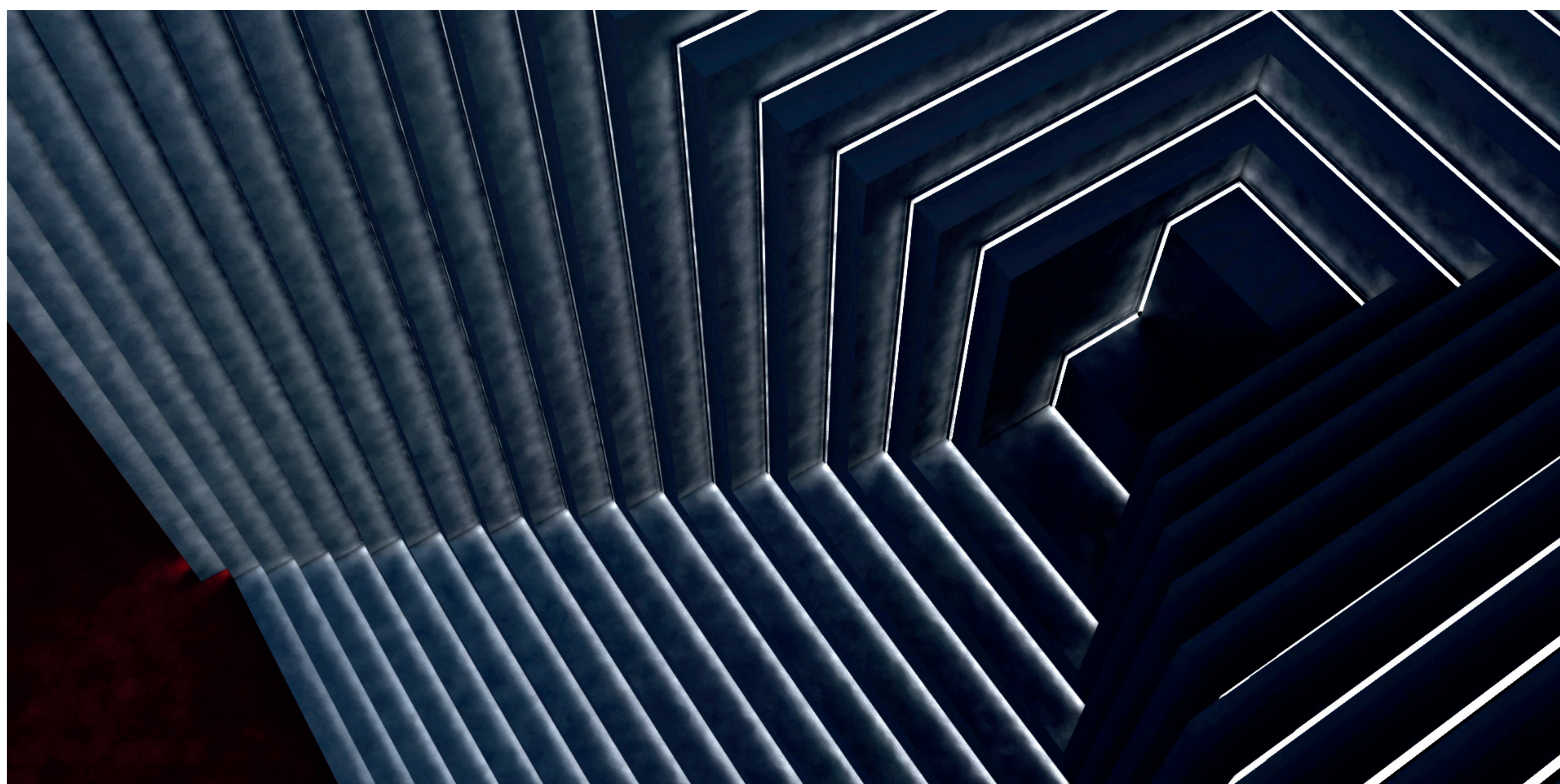


fig. 8 - Detail with lighting



fig. 6 - UNOVIS group logo

